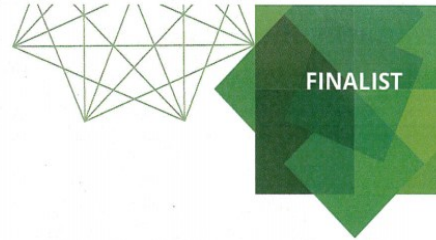




Solutions For The Construction Industry
Since 2007



In acknowledgement of your outstanding achievement
it is with great pride that we recognize

Radium Technologies

as a regional finalist in the
Canada's Best Managed Companies program



Canada's Best Managed Companies Selection Board



2019

Award year

Program sponsors

Deloitte.
Private



CANADIAN BUSINESS



Finalist in 2017, 2018 & 2019

Introduction

Radium Technologies Inc. is an industry leader providing construction & maintenance services to the heavy industrial, agriculture, oil & gas industries across western Canada since 2007. Our reputation as an industry leader is rooted in an all-encompassing corporate visions to supply only premium services to our clientele while ensuring a strong commitment to HSE & (C) Community being our strong emphasis in everything we do.



Introduction



Core Values



Safety



Project Management Tools



Construction Management Tools



QA / QC



Radium Community Relationship



Past Project Experience





Radium
TECHNOLOGIES INC

CORE VALUES



Core Values

Safety Culture & Attitudes

Environmental Stewardship

Quality Craftsmanship

United Teams

Effective Working Environments

New Technology

Competitive Pricing

Efficient Leadership

Schedule Driven & Committed

“You get back what you put in!”



Radium
TECHNOLOGIES INC

SAFETY



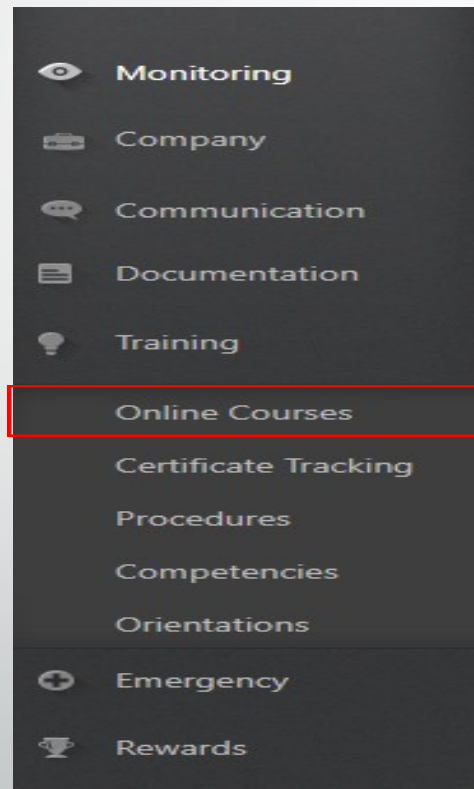
Radium's Safety Support Network

"Working with industry is imperative to the continual improvements to our organization. Our engaged staff & field construction groups help deliver skills, knowledge & attitude for safety excellence. Radium owes the successful possession of its certificate of recognition to its high quality & professional personnel".



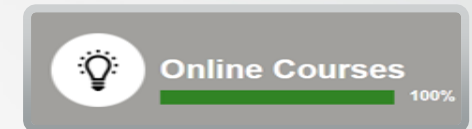
Radium's Safety Sync Management Program

“Radium’s customizable online safety portal allows for electronic safety communications, online training, orientations, notifications, tickets, incident & statistical tracking to the entire labour pool. This software allows us to load all Radium corporate manuals, safe operating procedures, policy, producer & legislation documents that can be accessed remotely by anyone to provide quick accessible information”.



	Gas Hazards and Monitoring	8 Lesson(s)
	Health and Wellness	4 Lesson(s)
	Heavy Equipment	2 Lesson(s)
	Hours of Service - Canada	9 Lesson(s)
	Housekeeping	2 Lesson(s)
	Incident Investigation	8 Lesson(s)
	Material Hazards in the Workplace	6 Lesson(s)
	Mobile Equipment	2 Lesson(s)
	N.O.R.M.	2 Lesson(s)
	Occupational Health and Safety	6 Lesson(s)
	PPE - Respirators	3 Lesson(s)
	Return To Work	2 Lesson(s)
	Root Cause Analysis	3 Lesson(s)
	Safe Driving Practices	4 Lesson(s)
	Safety Supervision	5 Lesson(s)
	Semi-CAMS orientation	1 Lesson(s)
	Transportation of Dangerous Goods	18 Lesson(s)
	Wildlife Awareness	5 Lesson(s)
	Workers Compensation Board	2 Lesson(s)
	Workplace Harassment & Violence	3 Lesson(s)

	Aboriginal Awareness	3 Lesson(s)
	Behavior Based Safety	1 Lesson(s)
	Commercial Vehicles	4 Lesson(s)
	Common Worksite Injuries	8 Lesson(s)
	Company Orientation	1 Lesson(s)
	Confined Spaces	4 Lesson(s)
	Cranes, Hoists and Lifting Devices	5 Lesson(s)
	De-energization of Stored Energy	2 Lesson(s)
	Electrical Safety	3 Lesson(s)
	Emergency Preparedness	3 Lesson(s)
	Environmental Awareness	3 Lesson(s)
	Equipment and Tool Hazards	4 Lesson(s)
	Fall Prevention	7 Lesson(s)
	Fatigue Management	4 Lesson(s)
	Fire Safety	2 Lesson(s)



“This system is designed to provide deficiency notifications to Radium’s corporate staff as well as the worker in question with follow up interventions. Providing a qualified and competent labor force to our customers is a top priority”.



Radium
TECHNOLOGIES INC

PROJECT MANAGEMENT TOOLS

Project Management



Structural and Piping Drafting

Material Take Offs

Procurement Management

Logistical Support

Estimating, Budgeting and Cost Control

Reporting and Forecasting

Constructability Review of Engineering Designs

Reviewing Customer Budget Estimates Using FEED Studies

Safety and Environmental Stewardship

“Experienced with over 75 years combined in project management roles. Our management team has the experience & skill set to deliver effective projects safely while complying to our customers processes & milestones. At Radium we pride ourselves in our extensive pre-job planning. Completing jobs safely, efficiently, on time & on budget is our trademark”.

Demonstrate HSE Stewardship

Trend Performance Factors

Create and Confirm Material Quantities

Provide Material Take Offs

Change Management & Control

Allocate Manhours to Scheduled Activities

Execution Planning

Turnover and Quality Packages

Generation of Field Installation Work Packs

Contract Negotiation and Dispute Resolution

Start-up and Commissioning Management

Daily and Weekly Reporting

Project Completions Reports

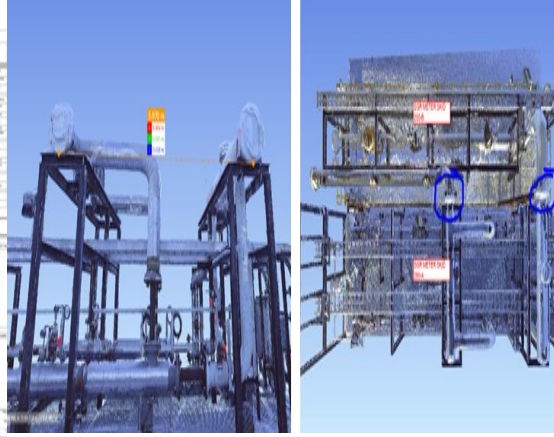
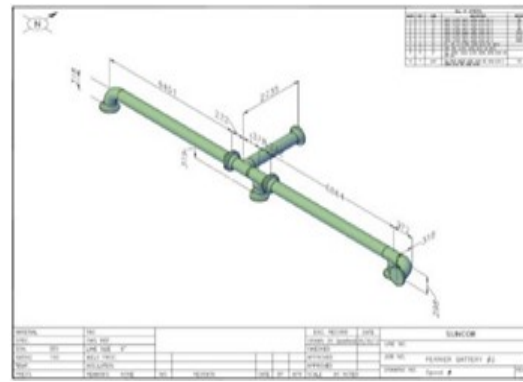
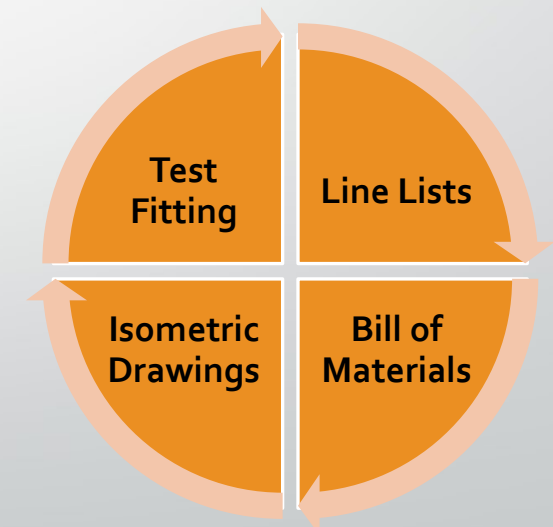
Enforce Company Policies and Procedures

Modelling & Drafting

“Scans are evaluated, compiled and presented to both the client and vendor to ensure any dimensional discrepancies are corrected prior to shipment. Our ability to preform test fitting of interconnected models using CAD will eliminate guesswork at site”.

“Our drafting & modelling team creates on going support for our Grande Prairie shop to optimize shop efficiencies with detail fabrication schedules to support project deliverables. Our ability to proved detailed design assistance to our customers allows for a support arm within Radium to address any drafting & modelling project pressures”.

“Radium’s drafting & modelling team consist of members with a combined experience totalling over 50 years ready to support any project requirements”.



Drafting

- 2D Conventional
- 3D Laser Scans
- 3D Modelling as Built



CADWorx



AutoCAD



Tekla

Project Controls

Detailed bar chart

Detailed network diagram containing all activities

Spooling & drafting for Radium fab shop

All off site fabrication schedules

Module assembly & slotting

Equipment & material loading with delivery schedules

Critical path

Mobilization & demobilization dates

Activity start & completion dates (on & off site)

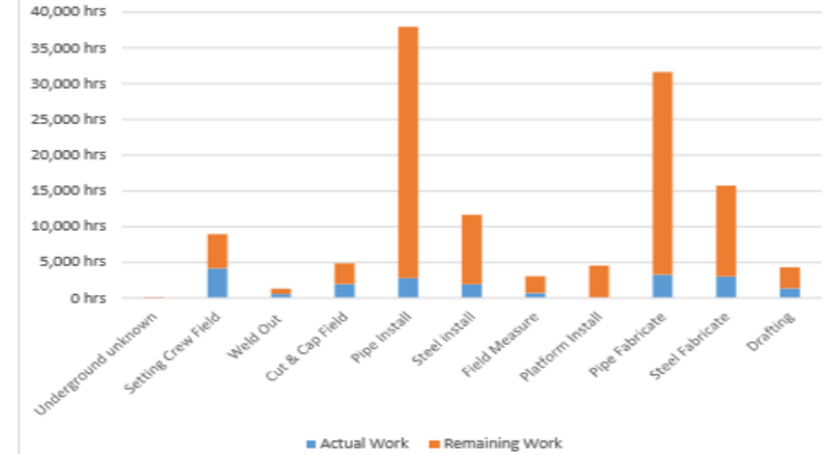
Indicated milestones

Schedule floats & constraints

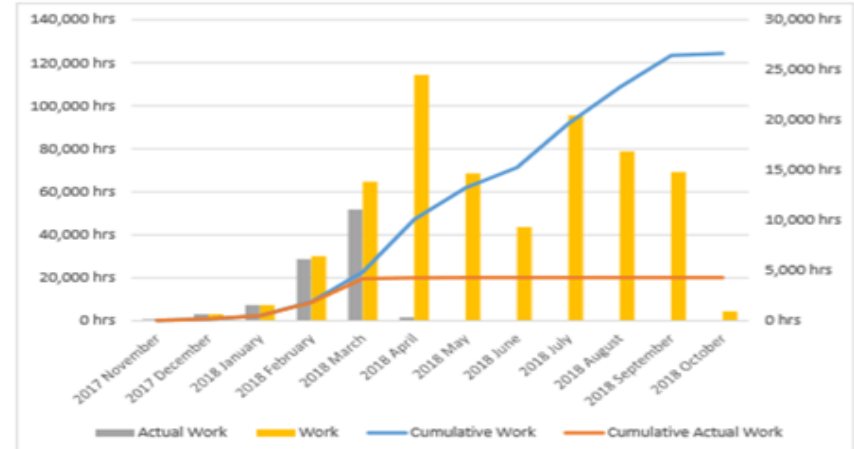
Quantity commodity curves by discipline and by area

Man power loading with hours

“At Radium we take pride in our cost control and scheduling. We use detailed work breakdown structures at the estimating Phase to ensure quantified costs. Radium’s engineering and construction contractors will be contractually obligated to supply the following types of schedules and related information”.


















WORK STATUS



TASK BURNDOWN

Project Reporting

-  **HSE**
-  **Environment**
-  **Quality and Turnover**
-  **Open OSD's**
-  **Installed Quantities – Shop**
-  **Installed Quantities – Field**
-  **Shop Score Card**
-  **Cost Report**
-  **Main Accomplishment – Previous Month**
-  **Main Accomplishments – Next Month**
-  **Scope Change, Rework and Commercial Items**
-  **Upcoming Man Power**
-  **Issues, Concerns and Delays**
-  **Monthly Pictures**
-  **S-Curve and Productivity Factor Curves**



CLIENT

DOCUMENT NO: RAD-RPT-005

SITE MONTHLY CONSTRUCTION REPORT

WAPITI GAS PLANT

MONTH ENDING 31-MAR-18

DOCUMENT REVISION HISTORY

5-Dec-17		DM	JH	DM
18/04/01	Revision Notes	Originator	Checker	Approver

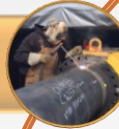


Radium
TECHNOLOGIES INC

CONSTRUCTION SERVICES

Construction Services

Fabrication



Construction Services



Project Management



Quality Control & Assurance



3D Laser Scanning



“At Radium we are bridging the gap between engineering & construction. Our experience is our strength”.

Module Assembly



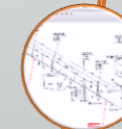
Turnaround and Maintenance



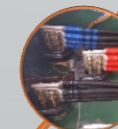
Project Controls



Drafting & Modelling



Electrical & Instrumentation



Construction Services

- Gas Plants
- SAGD CPF Facilities
- Well Pads
- Batteries
- Compressor Stations
- Metering Stations & Skids
- Separators

Facility Construction



- Emulsion Flow Lines
- Water Pipe Lines
- Fuel Gas Pipe Lines
- Utility Lines
- Expansion Loops
- Tie Ins

Above & Below Ground Pipe



- Facility, Well Pad Maintenance & Turnarounds
- Modifications, Process Upgrades and Debottlenecking
- Repairs

Turnaround & Maintenance



- Buildings
- Heaters
- Packages
- Tanks
- Victaulic, Above & Below Ground Piping

Heavy Industrial & Agriculture



- Maintenance
- Construction
- Commissioning
- Control Panel Assembly
- Skid Fabrication & Pre-Wiring
- Combustion Service

Electrical & Instrumentation



“Radium’s construction services group has the capability to provide installation services to green & brown field sites offering piping, structural & civil services along with any equipment & module setting requirements”

“Radium’s pipeline construction services group has the ability to preform above & below ground piping work. Ranging from 2 to 48 inch. Ranging in various types from steel, flex pipe, plastic, fiberglass & high density polyethylene conforming to CSA Z-662 & B31.3”

“Radium’s experienced teams are able to service our customers needs for any plant schedule shut downs, improvements & repairs. Working together with onsite construction operations & commissioning start up groups to ensure safe & timely turnover to production operations”

“Radium’s has diversified as a company with the ability to provide electrical & mechanical services to the heavy industrial and agriculture industries. We can take on any construction project within various industries”

Industrial Services



Fabrication

- 22,000 sq. ft. facility built in 2015.
- Four – 5 Ton overhead cranes w/ 18' hook clearance & 6 total bays.
- Current spooling capacity – 2,500 diameter inches/week.
- Maximum spooling capacity – 5,000 diameter inches/week.
- Capacity for 20 TNE/week of structural steel
- Ability to complete various types of work including structural, stainless, carbon & high tensile steel.

“Radium Technologies has a new construction fabrication & module assembly yard in Grand Prairie, Alberta. Providing 22,000 sq. ft. of fabrication shop space with capabilities of producing up to 4,000 diameter inches per week of spooling capacity for various types steel and piping. The 13 acre module yard is high graded for efficient assembly of equipment mods. The 8,000 sq. ft. cold storage tent coupled with several pieces of support construction equipment is located within the mod yard of which the entire proximity is fenced for added security”.



Module Assembly

- 13 acres of developed yard.
- High grade access & assembly areas.
- Fully fenced & gated.
- 8,000 sq. ft. erected cold storage tent.
- Hydro testing capabilities.
- 1x zoom boom, 1x front end loader
- 1x skid steer, 2x TNE pickers
- 4 – 16' x 12' fully enclosed welding shacks
- Currently sourcing a RT crane

Shop Fabrication

Pump Modules

Pipe Racks

Skid Package

Spooling

Structural Steel

Bolt Up

Post Weld Heat Treating

Internal & External Coating

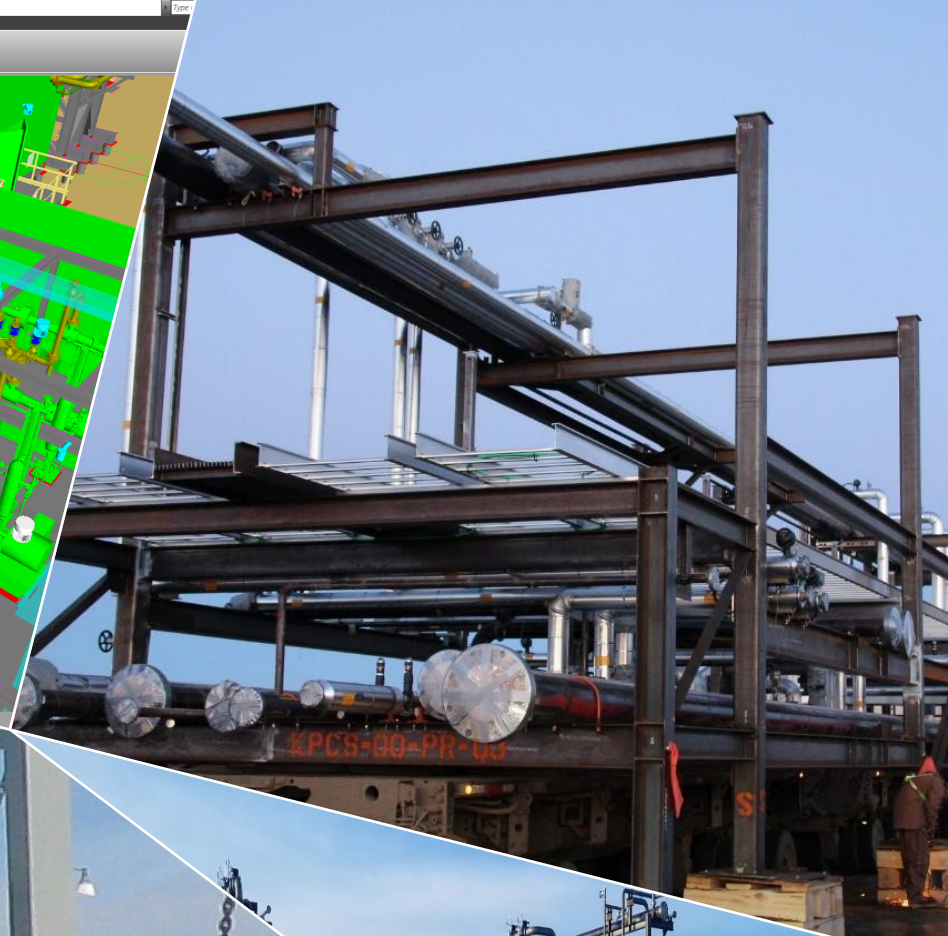
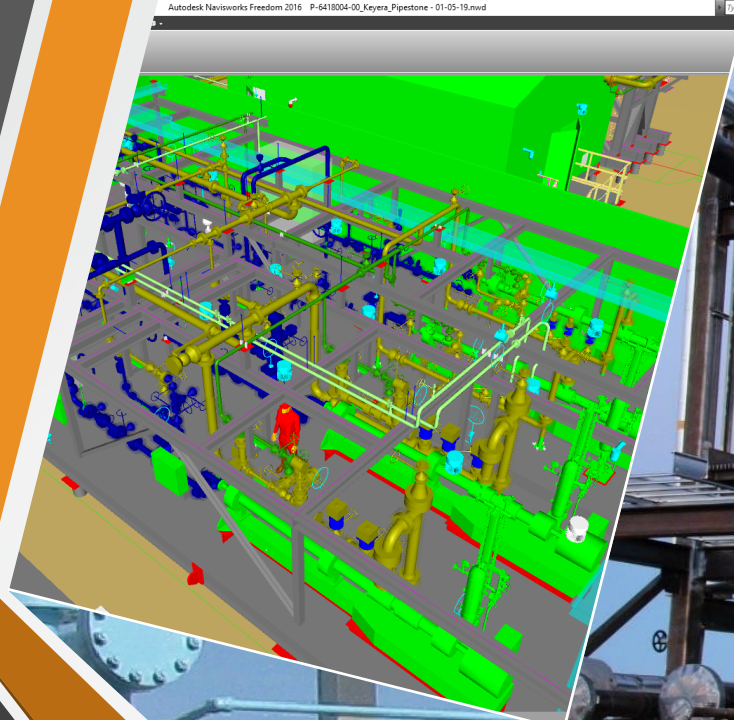
Electrical & Instrumentation

Insulation

Pump Alignments & Strain Checks

Design & Constructability Involvement

Coordination & Interface Planning



QA/QC



Quality Control & Assurance



- Pre - Qualification
- Vendors
- Fabricators
- Contractors



- Source Surveillance
- Vendors
- Fabrications
- On Site Contractors



Control & Assurance Weld Tracking,
Procedures & Data Sheets
ABSA, CWB and API On Site Staff
Levels 1 & 2
Hydrotesting NDE Requests RFI's,
ITP's & NCR's

Radium's Quality Management Plan Definition

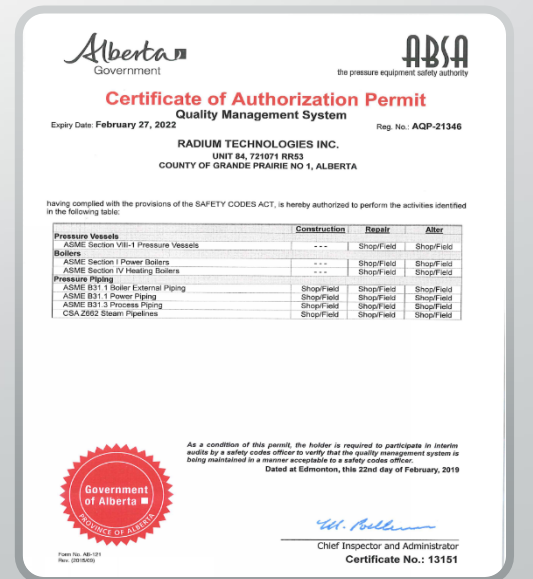
Our QP plan is a working document design to hold accountability for processes of fabrication, construction installation & maintenance turnarounds against code, special requirements & customer expectations.

“Our quality plan (QP) will describe the quality standards, both internally & externally to which the project will be accountable for while compiling with all codes, regulations & standards locally, provincially & federally. At Radium we are committed to excellence to the highest level of our QP to our customers for products, services, suppliers & any subcontractors”.

Certifications

“We are ready to take on any WPS carbon steel (B31.3, B31.1 & CSA Z662), stainless low temp (A333), heavy wall & high yield (PWHY & CSA Gr. 483) with our shop & field sites certified for CWB W47.1 structural steel welding”.

“Radium’s quality management program supports any maintenance, turnaround, manufacturing & construction installation projects. We hold all the required certifications while adhering to all codes, regulations & industry standards”.





Radium
TECHNOLOGIES INC

RADIUM'S COMMUNITY RELATIONSHIP

First Nation Developments & Community Relationships



Alberta Partnership – Samson Cree Nation
Located in Maskwacis, Alberta, Canada.

<http://samsoncree.com/>



Saskatchewan Partnership – Kahkewistahaw First Nation
Located 15km North of Broadview, Saskatchewan, Canada.

<http://www.kahkewistahaw.com/>




Serving the communities of Duncan's First Nation, Horse Lake First Nation and Sturgeon Lake Cree Nation.

<https://www.westerncree.ca/>



British Columbia Joint Venture – Doig River First Nation
Located East of Fort Saint John, British Columbia, Canada.

<http://www.doigriverfn.org/>

 Radium's focus areas for additional partnerships.

"Radium is focused on working with first nation groups throughout Western Canada. With two current developed partnerships, we are able to work together to provide new opportunities to their communities advancing trade skills within the Oil & Gas industry. Radium strives to develop our recourses in a social economic way with continued stakeholder development to form a unified solution to the mechanical construction service industry".



Radium
TECHNOLOGIES INC

PAST PROJECT CLIENTS



Clients

Recent Project Highlights

- SemCAMS Wapiti 200mmscf plant
- Enbridge line 3 large bore tie ins
- Plains Midstream Fort Saskatchewan Plant
- Keyera Fort Saskatchewan Gas Plant
- Keyera Simonette refridge expansion
- Husky LACT installs

Radium Technologies is experienced in all upstream, midstream and downstream O&G industries with additional experience in heavy oil, thermal, gas and liquid construction aspects.

Company Highlights

Current TRIFF – 0.00 (2020)



Ability to reach 700 Peak Craft Labour (Directs & Indirects)



Project size from \$0-100 Million Dollars



Weekly Fabrication Abilities of 5000 DI & 20 TNE of Structural Steel

Contact Information Page



“We add value to people by serving them”

info@radiumtechnologies.ca